



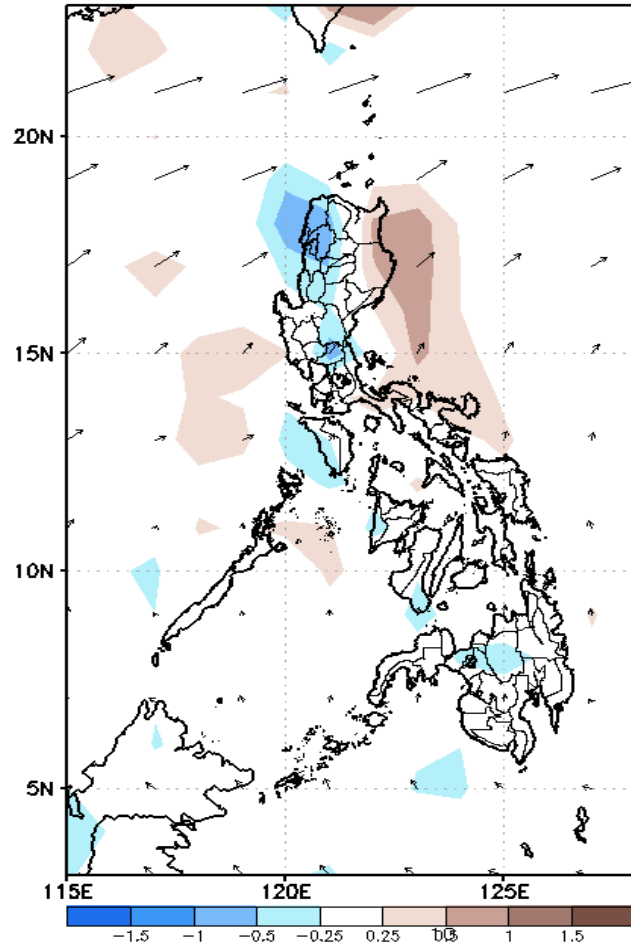
Week 1 & Week 2 Forecast for the Philippines using GEFS Model



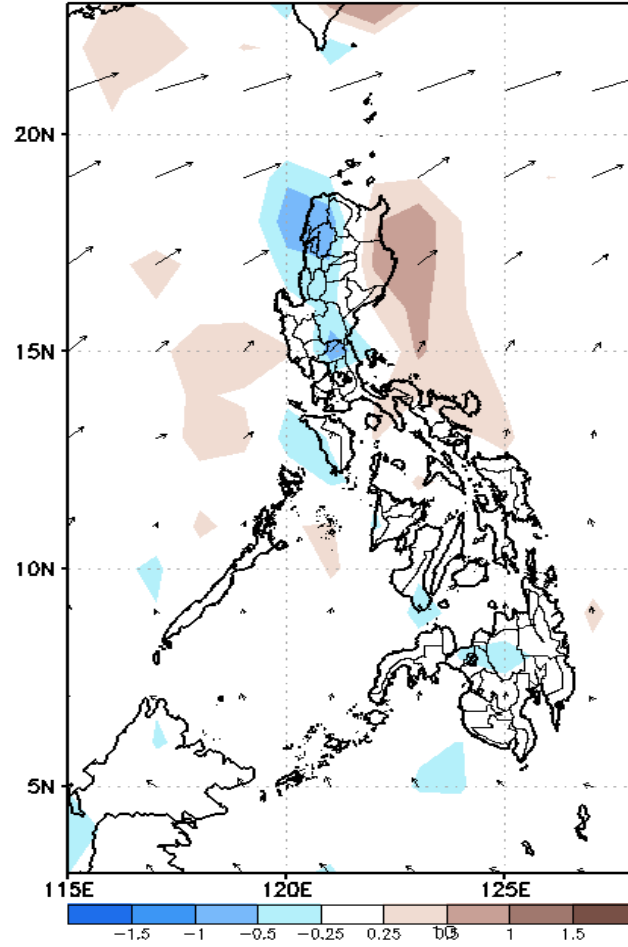
GEFS Week-1 Forecasts: Divergence & Wind Anomaly

Week 1: December 10-16, 2020

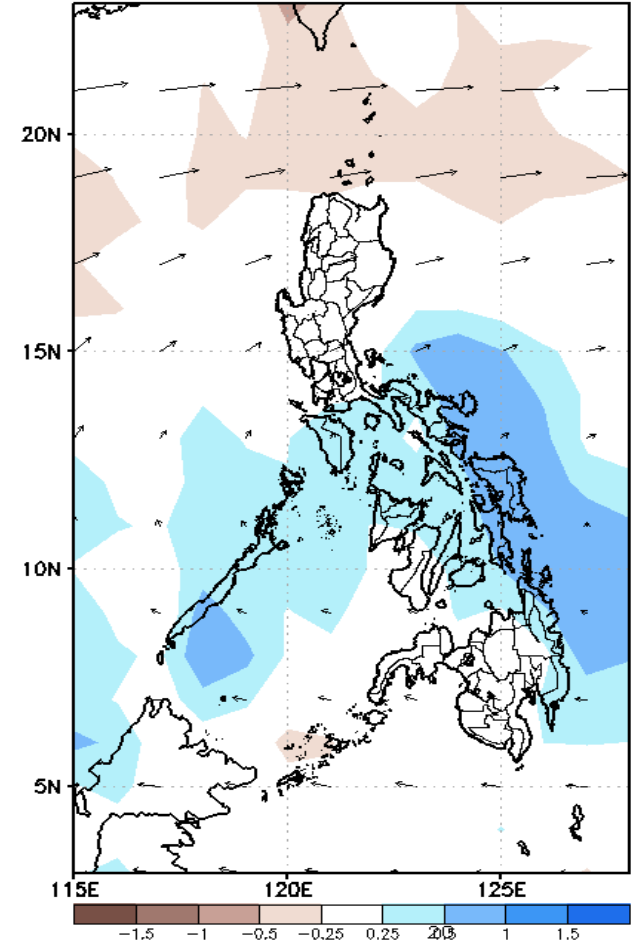
GEFS Week-1 850-hPa Divergence and Wind Anom
Valid: 20201210 - 20201216



GEFS Week-1 700-hPa Divergence and Wind Anom
Valid: 20201210 - 20201216



GEFS Week-1 200-hPa Divergence and Wind Anom
Valid: 20201210 - 20201216

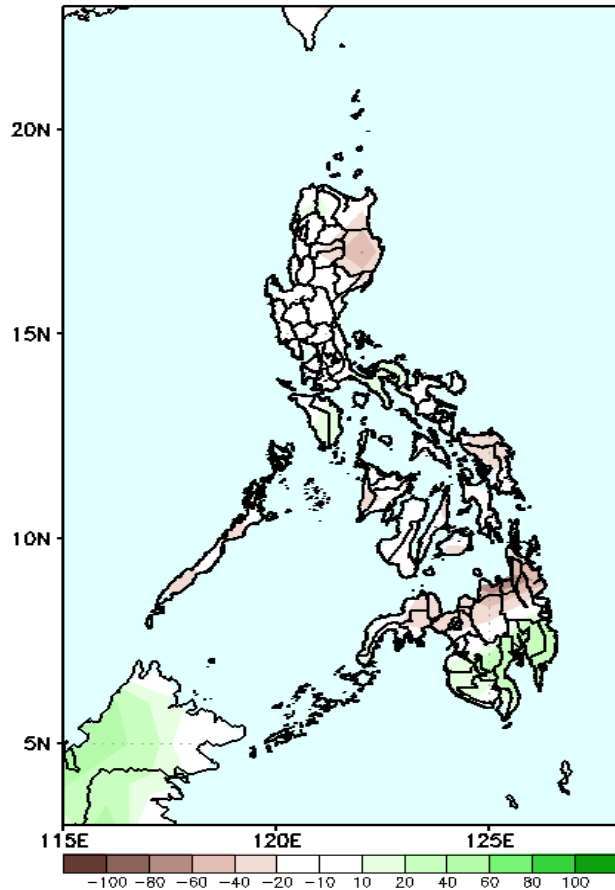


Upper and low level Divergence suggest likelihood of precipitation in some parts of Ilocos region, CAR, Nueva Ecija, Visayas and eastern Mindanao. Northeast monsoon affecting extreme Northern Luzon while easterlies affecting most parts of the country during the forecast period.

Precipitation Anomaly and Exceedance Probability > 25/50 mm

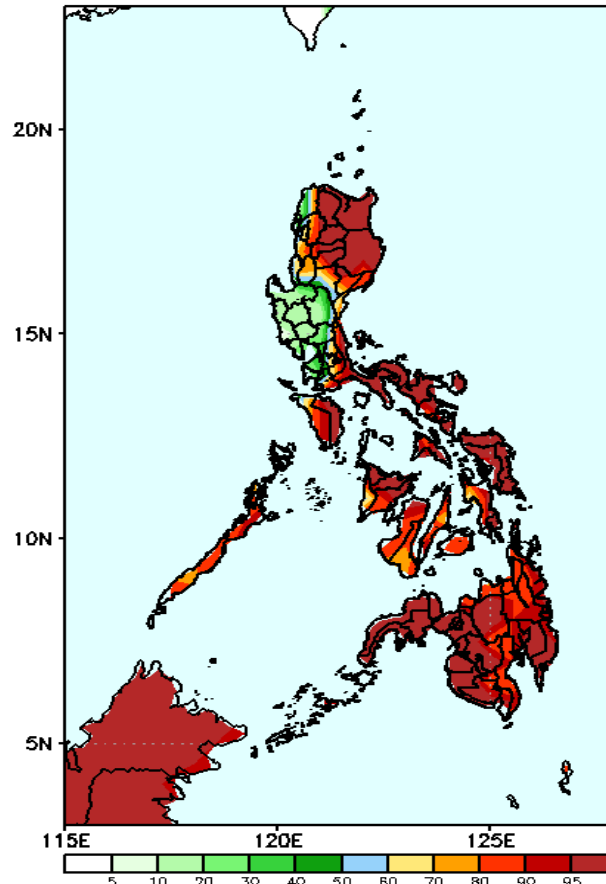
Week 1: December 10-16, 2020

GEFS Week-1 Precip Anomaly
Valid: 20201210 - 20201216



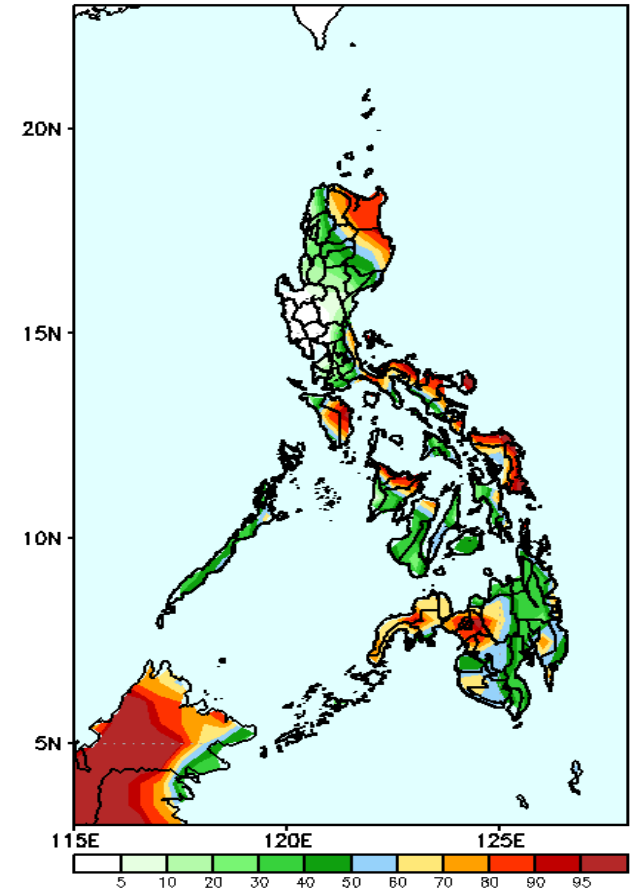
Rainfall deficit of 40-85mm in Cagayan, Isabela, most parts of Visayas and northern Mindanao is expected while increase of rainfall up to 40mm in southern Mindanao during the forecast period.

GEFS Week-1 Exceedance Prob. > 25mm
Valid: 20201210 - 20201216



High probability of rainfall to exceed 25mm in most parts of the country except Ilocos Norte, Pangasinan, most parts of Central Luzon(except Aurora), Cavite and Batangas during the forecast period.

GEFS Week-1 Exceedance Prob. > 50mm
Valid: 20201210 - 20201216

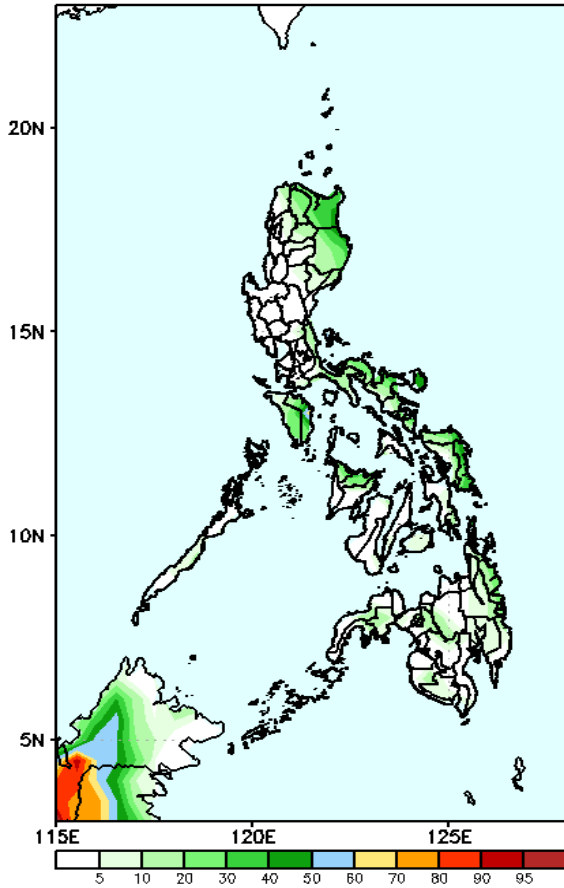


High probability of rainfall to exceed 50mm in Apayao, Cagayan, Isabela, Bicol region, Mindoro, Eastern Visayas, Aklan, Capiz, Lanao provinces and Zamboanga Peninsula while less likely for the rest of the country during the forecast period.

Exceedance Probability > 100/150/200 mm

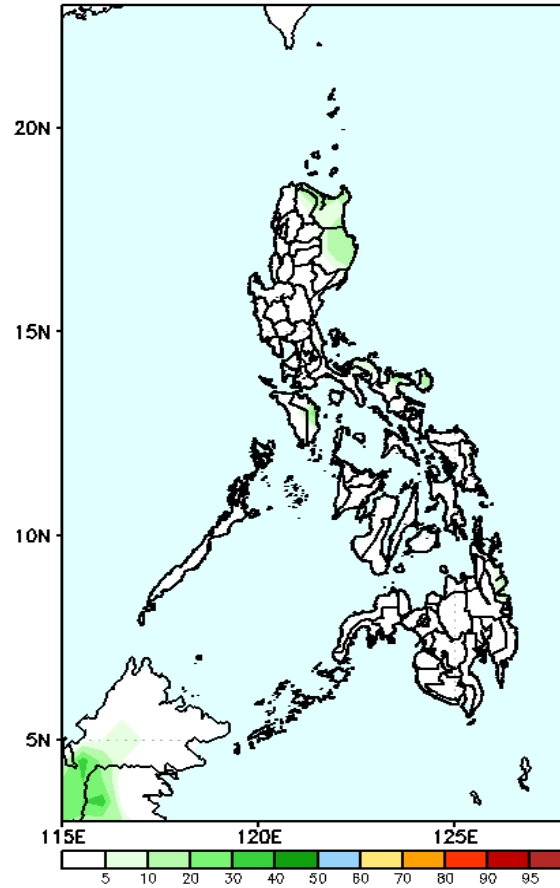
Week 1: December 10-16, 2020

GEFS Week-1 Exceedance Prob. > 100mm
Valid: 20201210 - 20201216



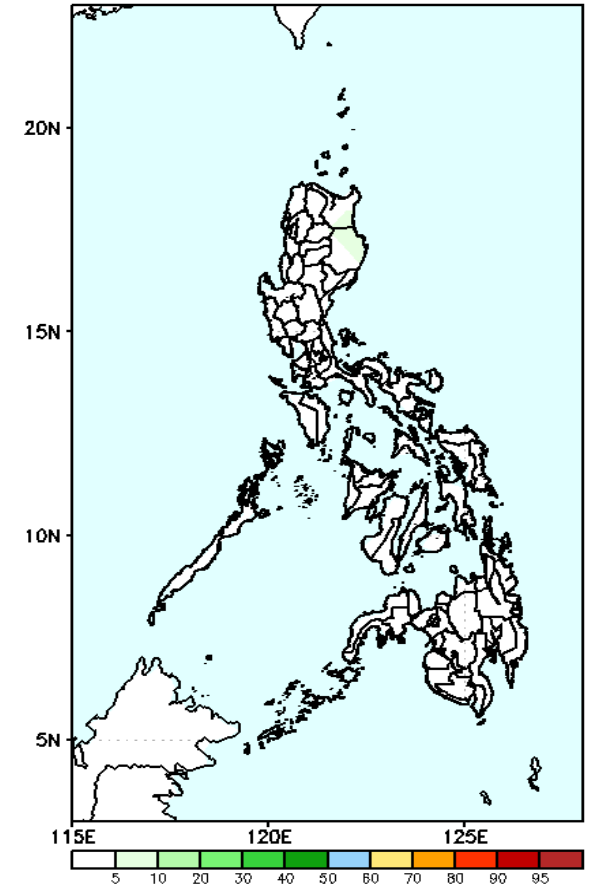
Less probability of rainfall to exceed 100mm in most parts of the country during the forecast period.

GEFS Week-1 Exceedance Prob. > 150mm
Valid: 20201210 - 20201216



Less probability of rainfall to exceed 150mm in most parts of the country during the forecast period.

GEFS Week-1 Exceedance Prob. > 200mm
Valid: 20201210 - 20201216



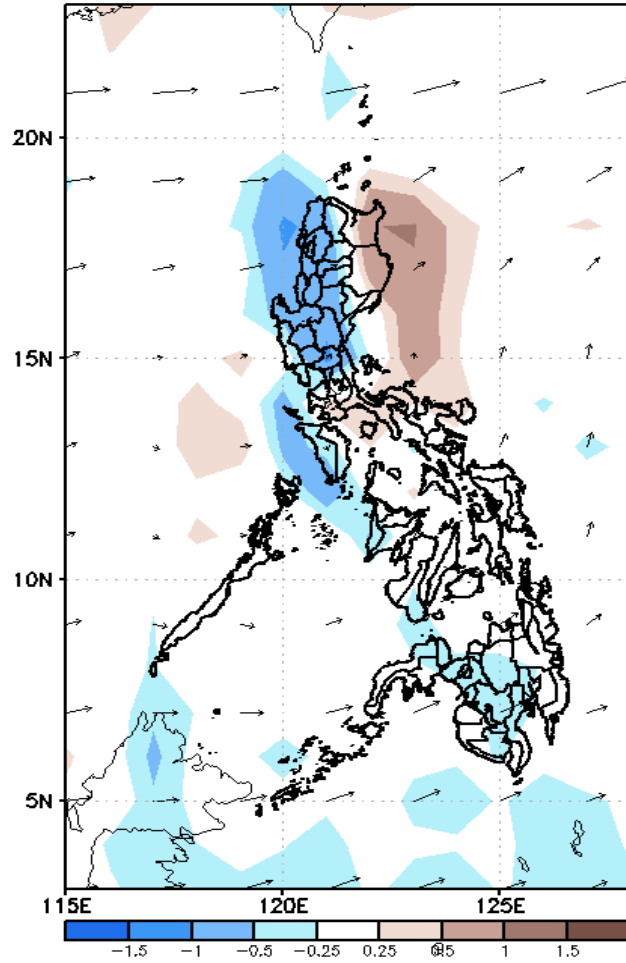
Less probability of rainfall to exceed 200mm in most parts of the country during the forecast period.



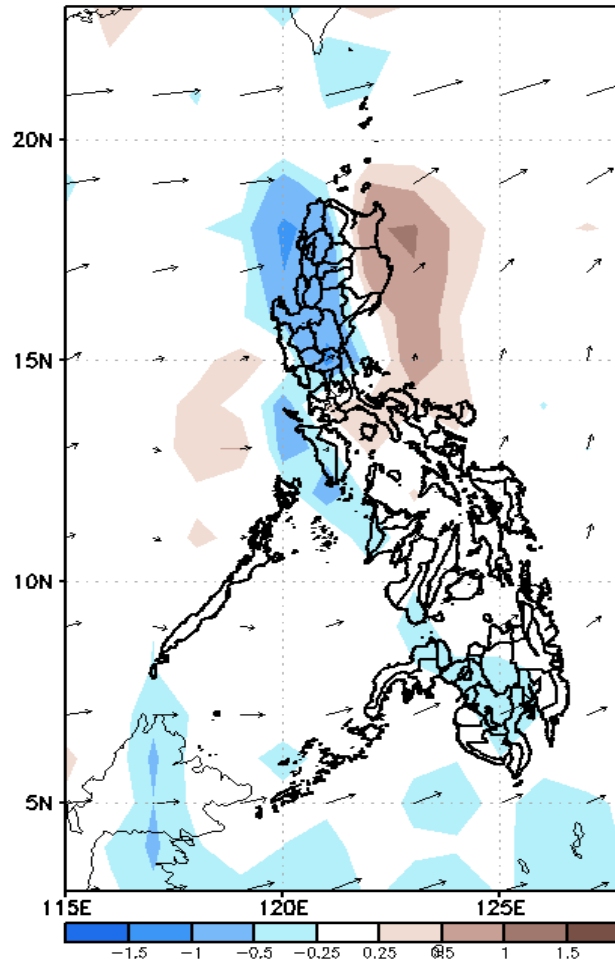
GEFS Week-2 Forecasts: Divergence & Wind Anomaly

Week 2: December 17-23, 2020

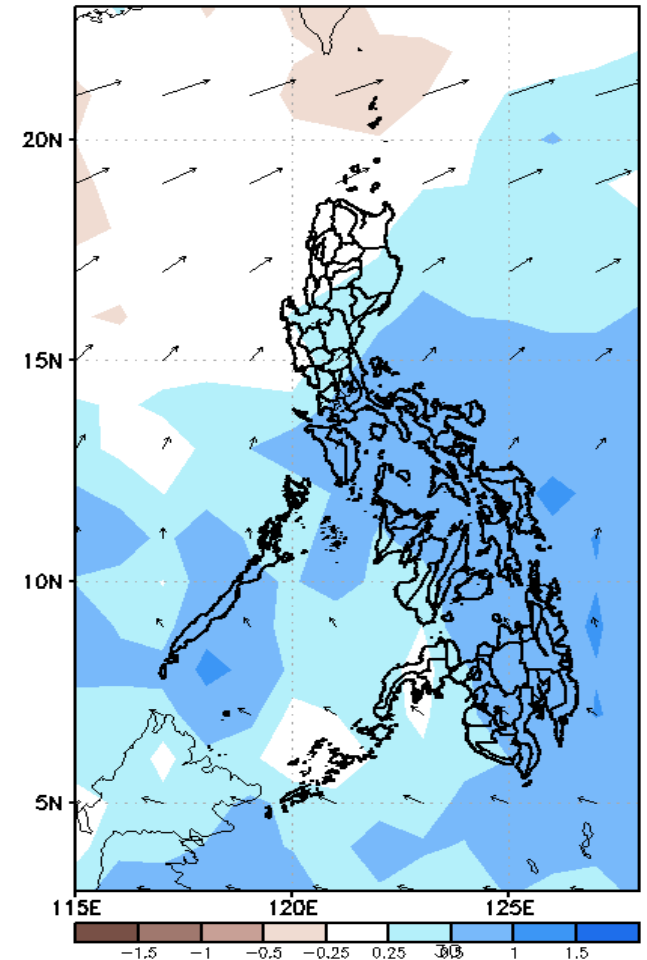
GEFS Week-2 850-hPa Divergence and Wind Anom
Valid: 20201217 - 20201223



GEFS Week-2 700-hPa Divergence and Wind Anom
Valid: 20201217 - 20201223



GEFS week-2 200-hPa Divergence and Wind Anom
Valid: 20201217 - 20201223



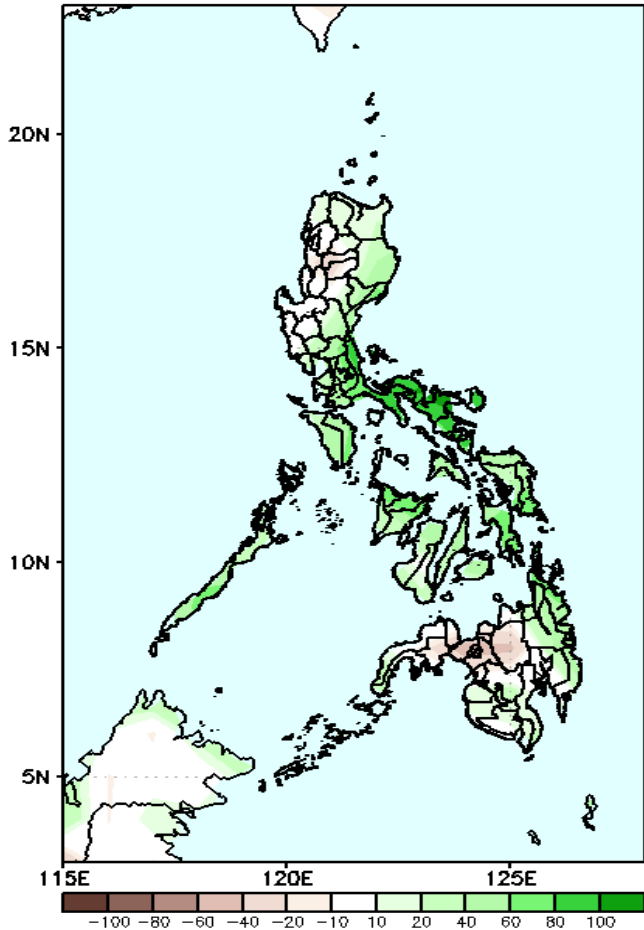
Upper and low level Divergence suggest likelihood of precipitation in most parts of the country. Northeast monsoon affecting most parts of Luzon while easterlies affecting Visayas and Mindanao during the forecast period.



Precipitation Anomaly and Exceedance Probability > 25/50 mm

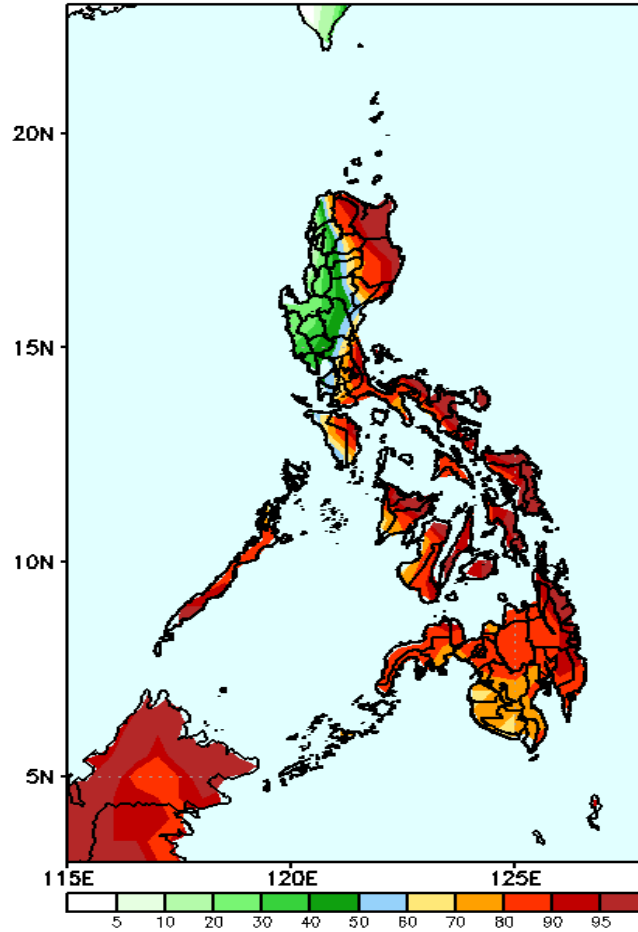
Week 2: December 17-23, 2020

GEFS Week-2 Precip Anomaly
Valid: 20201217 - 20201223



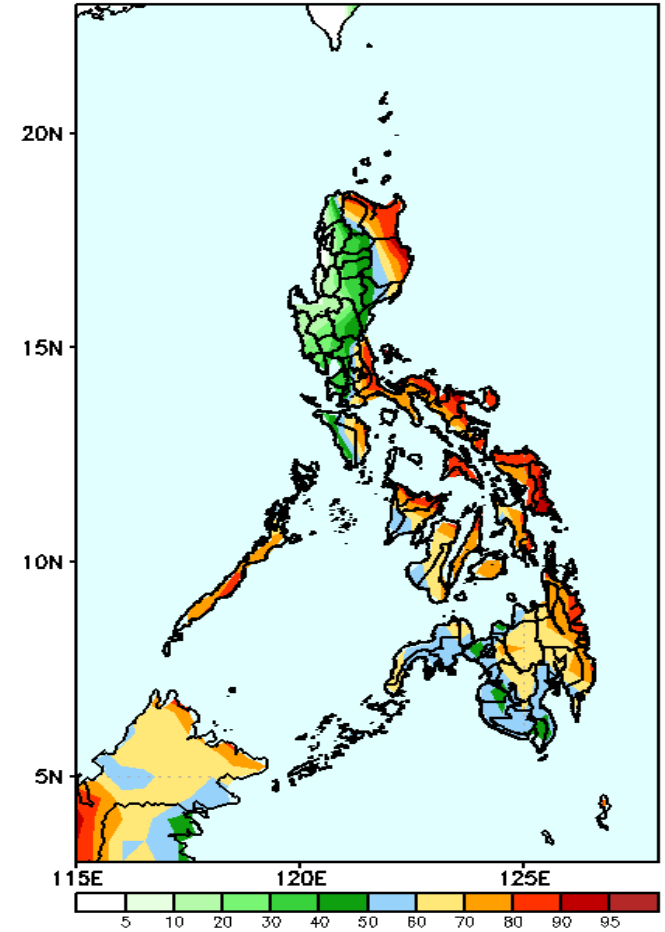
Increase of rainfall of up to 100mm in most parts of the country is expected except in western Luzon and northern Mindanao where there is 10-40mm rainfall deficit during the forecast period.

GEFS Week-2 Exceedance Prob. > 25mm
Valid: 20201217 - 20201223



High probability of rainfall to exceed 25mm in most parts of the country in the western section of Luzon where there is low probability during the forecast period.

GEFS Week-2 Exceedance Prob. > 50mm
Valid: 20201217 - 20201223

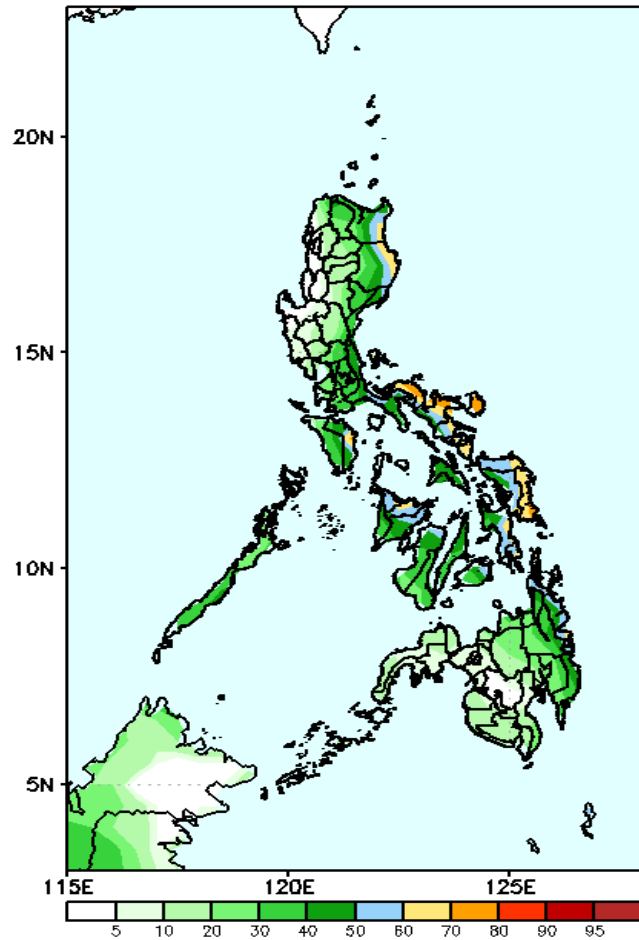


High probability of rainfall to exceed 50mm in Apayao, Cagayan, Isabela, Rizal, Laguna, Quezon, Bicol region, Mindoro and most parts of Visayas and Mindanao while less likely for the rest of Luzon during the forecast period.

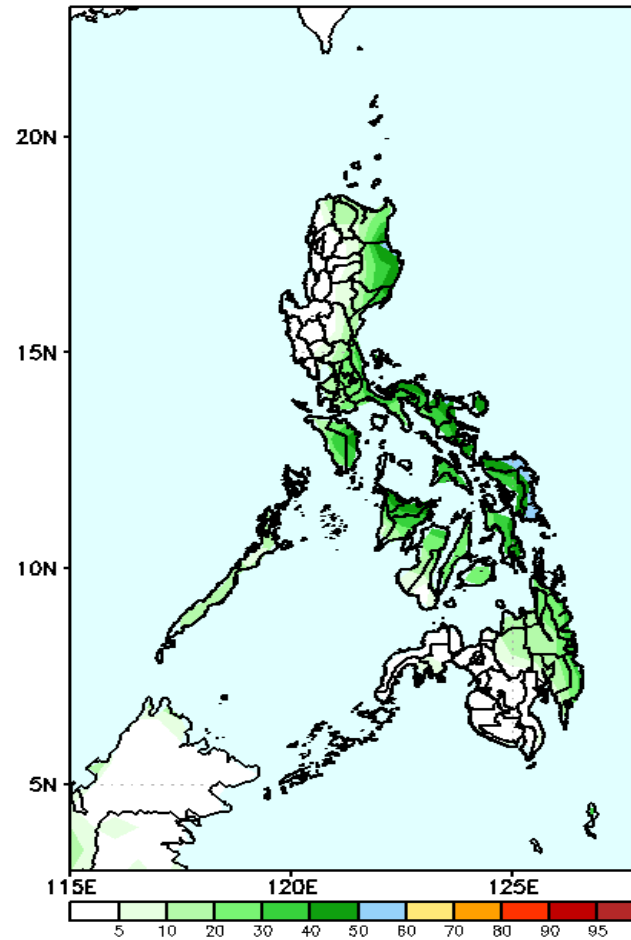
Exceedance Probability > 100/150/200 mm

Week 2: December 17-23, 2020

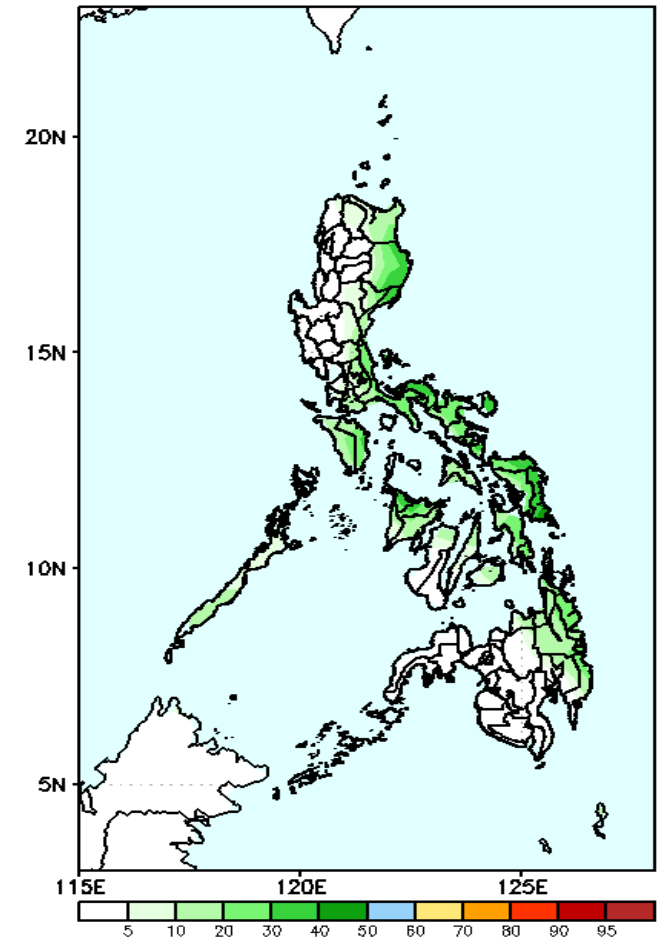
GEFS Week-2 Exceedance Prob. > 100mm
Valid: 20201217 - 20201223



GEFS Week-2 Exceedance Prob. > 150mm
Valid: 20201217 - 20201223



GEFS Week-2 Exceedance Prob. > 200mm
Valid: 20201217 - 20201223

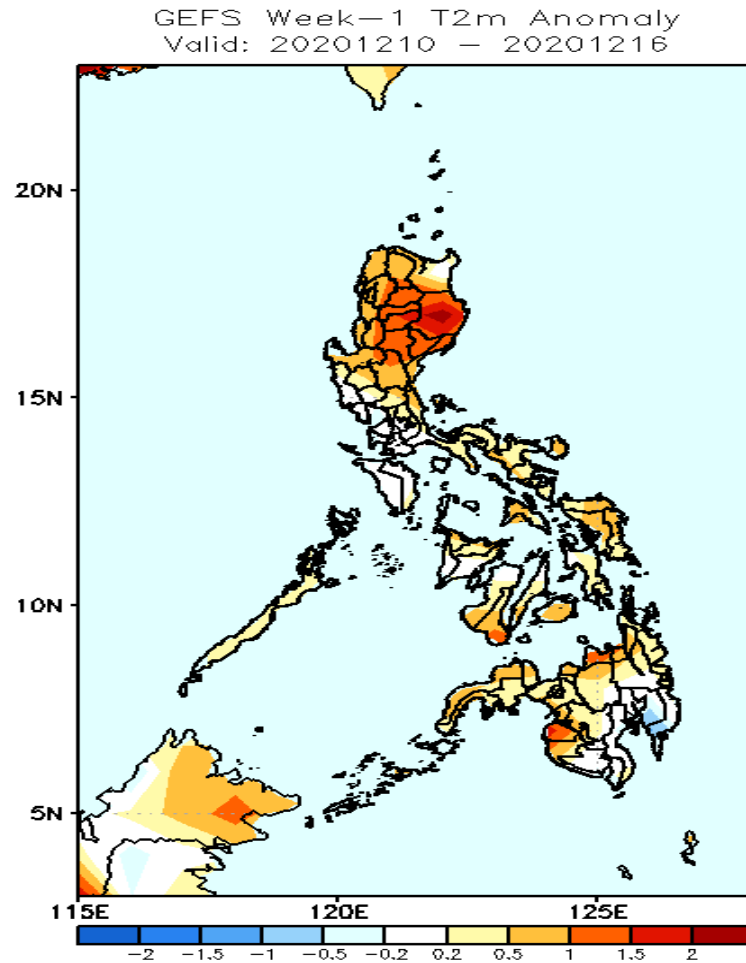


Less probability of rainfall to exceed 100mm in most parts of the country except Bicol Region and eastern Samar during the forecast period.

Less probability of rainfall to exceed 150mm in most parts of the country during the forecast period.

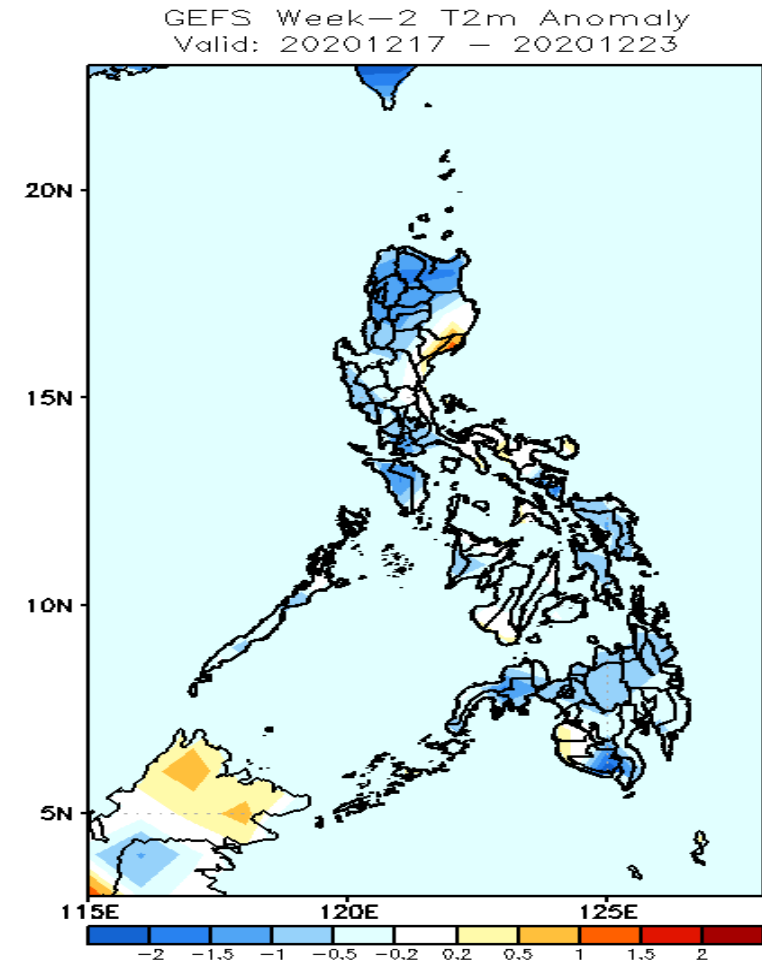
Less probability of rainfall to exceed 200mm in most parts of the country during the forecast period.

GEFS Week-1 & 2 Forecasts: T2m Anomaly



2m Temperature Week 1: December 10-16, 2020

Warmer than average surface air temperature is expected in most parts of Cagayan Valley and Cordillera Region, Negros Oriental, Maguindanao and Misamis Oriental while average to slightly warmer temperature for the rest of the country.



2m Temperature Week 2: December 17-23, 2020

Slightly cooler to cooler than average surface air temperature is expected in most parts of the country except in Aurora, Maguindanao and Sultan Kudarat where slightly warmer temp is more likely.